



STEP BY STEP – IIS, DotNET and SQL-Server Installation - for an ARAS Innovator9x Test System

Abstract

The intention of this document is to ensure successful installation of 3rd-Party software required for a subsequent installation of the ARAS Innovator 9.x Test System on a single computer running Windows XP (english).

If you follow each step in the given sequence, success is almost guaranteed. You may run the installations on different language versions of Windows XP and follow the same sequence but, of course, the screen shots and instructions will not match.

All installations should only take not more than 2 hours

After finishing this installation the resulting environment is intended for **TEST** and **DEMO** purposes only. Production systems of Aras Innovator need to run on a Microsoft Server operating system (such as Win Server 2000, Win Server 2003, or Win Server 2008).

To continue - You MUST have access to the internet to download the free 3rd party software components !!!

Aras Corporation

© 2009 Aras Corporation. All rights reserved

Notice of Rights

All rights reserved. Aras Corporation (Aras) owns this document. No part of this document may be reproduced or transmitted in any form by any means, electronic, mechanical, photocopying, recording, or otherwise, without the prior written permission of Innovator and other Aras product names and logos are trademarks of Aras Corporation.

Notice of Liability

The information contained in this document is distributed on an “As Is” basis, without warranty. While every precaution has been taken in the preparation of this document, Aras shall have no liability to any person or entity with respect to any loss or damage caused or alleged to be caused directly or indirectly by the information contained in this document or by the software or hardware products described in it.

E-mail: info@aras.com

Website: <http://www.aras.com>

Overview of 3rd Party Software Components Needed before you install Aras Innovator

- **Ensure Microsoft IIS (Internet Information Services) are running (if not install from Windows components). Innovator will run with IIS 5,6 or 7**
- .NET20 installation (only needed, if your Windows XP still has .NET 1.1 framework)
The English version of .NET20 you can be download from this link
<http://www.microsoft.com/downloads/details.aspx?FamilyID=0856EACB-4362-4B0D-8EDD-AAB15C5E04F5&displaylang=en>
- MS SQL Server 2005 Express (with **Advanced Services**)
(alternatively you may install the full, licensed version of SQL Server 2005 or 2008)
The English version of MS SQL Server Express (**Advanced**) you can download from this link.
<http://www.microsoft.com/downloads/details.aspx?familyid=4C6BA9FD-319A-4887-BC75-3B02B5E48A40&displaylang=en>
- Optional: Adobe SVG Viewer. The Viewer you can download from this link. Needed in Aras Innovator to display the dashboard graphics.
<http://www.adobe.com/svg/viewer/install/>

ATTENTION:

Aras Innovator release 9.1.0 does not support “*Microsoft Internet Explorer 8*”, yet. A service pack for Aras Innovator will be provided in the future and this document will get updated once it does.

Although not critical for these installations you might want to check here already, if IE 8 is installed

If yes, please look-up information in Microsoft’s knowledge base (on the web) how to un-install IE 8 and un-install IE 8 now !!!



Installation Sequence

It is good practice to download all 3rd party components and place them into install folders on your computer before you start any installation (i.e. into C:\install\xxx).

However, each of the following sections in this document will also include where and how to download the appropriate 3rd party components.

1. Adding Windows component IIS – (from XP Installation media)
2. Ensure .NET 2.0 Framework is available (if not, download install it)
3. Install MS SQL Server 2005 Advanced (Express Edition)
4. Optional: Install Adobe SVG Viewer

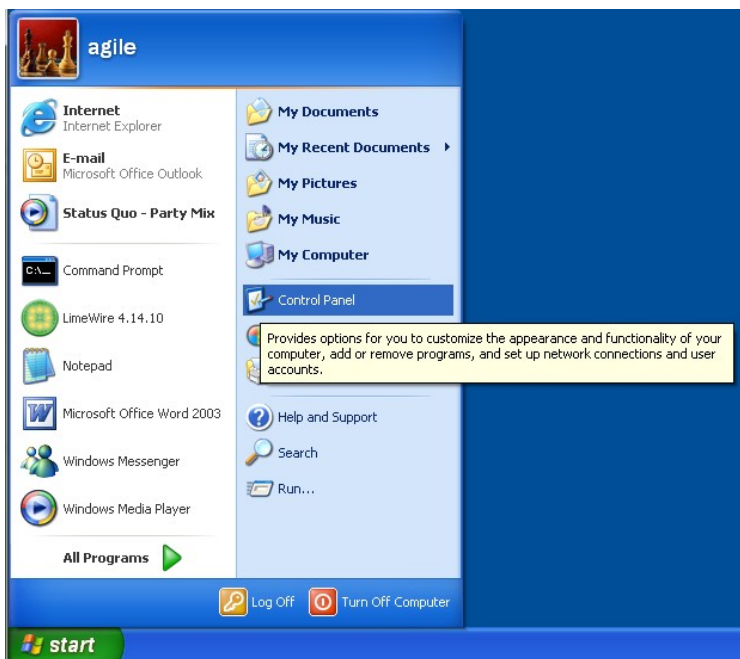
Trouble shooting: Verify IIS settings and IE settings

Adding Windows component IIS – (from XP Installation media)

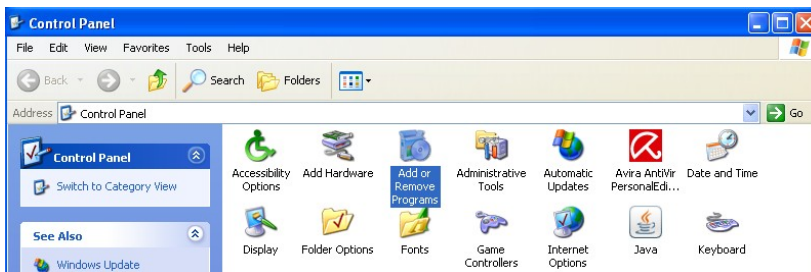
Note: If you are sure IIS is already running on your Windows XP on your computer, then skip this section.

Checking if IIS is already installed

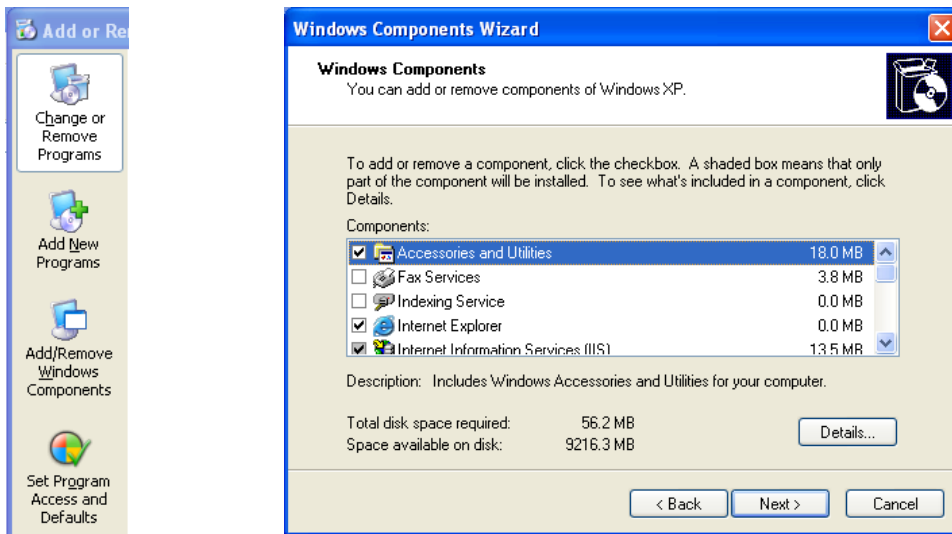
Start the Control Panel



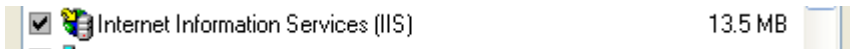
Double-click on “Add or Remove Programs”



Click on “Add/Remove Windows Components” and wait for the “Windows Component Wizard” to pop up.



Scroll down to find the “Internet Information Services (IIS) line.



If there is a checkmark placed in this option then you do have IIS installed and running. You do **NOT** need to continue with this section. Go to the next section and continue with the remaining installations.

Installing the IIS components

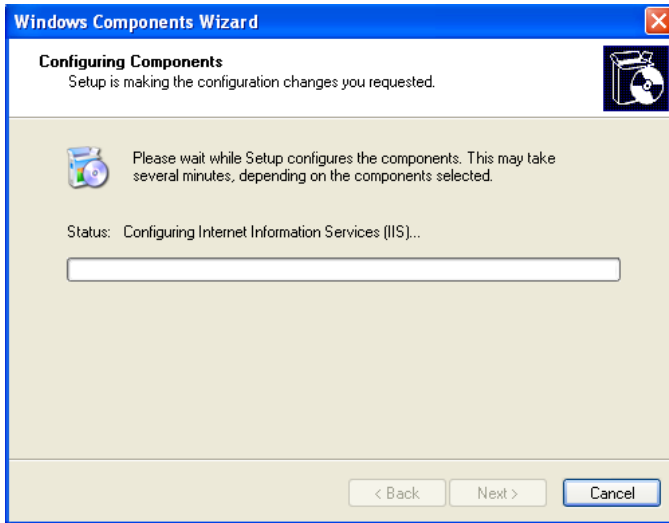
If you do NOT have a checkmark in this option, you need to add (install) the IIS components.

YOU WILL NOW NEED THE WINDOWS XP INSTALLATION MEDIA !!!

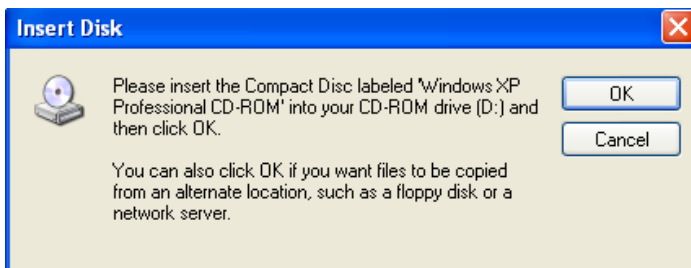
If you do not have a Windows XP installation CD (or files) available, contact you IT department and ask for assistance.

You should not continue with the remaining installations since a test system with ARAS Innovator on a single computer will not run without IIS !!!

To start the IIS installation, place a checkmark in the empty box and click on the “Next” button. The installation of the IIS Components will start.



You will be prompted to insert the installation CD or browse to a location with XP installation files.

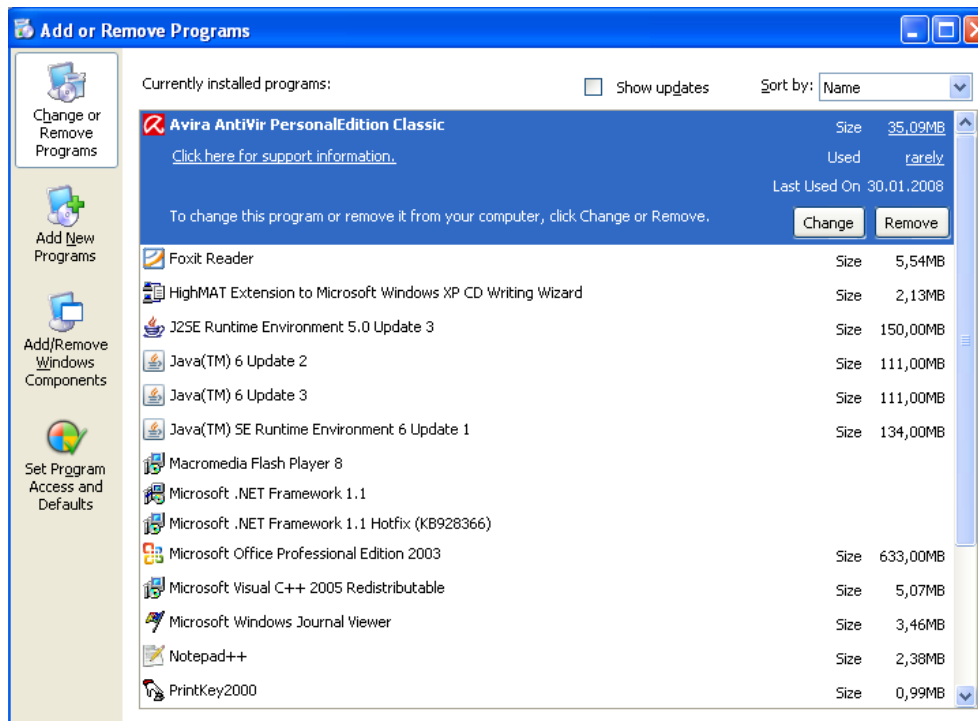


Continue with the installation wizard always using the default settings and “Next”

Restart your computer after this installation has finished

Checking the .NET environment

Run Control Panel to check which version of the .NET is running on your Windows XP



If you see .NET Framework 1.1 listed but you do not see .NET 20 framework listed then you need to install .NET 20. **You do not need to remove .NET 1.1 !!!**

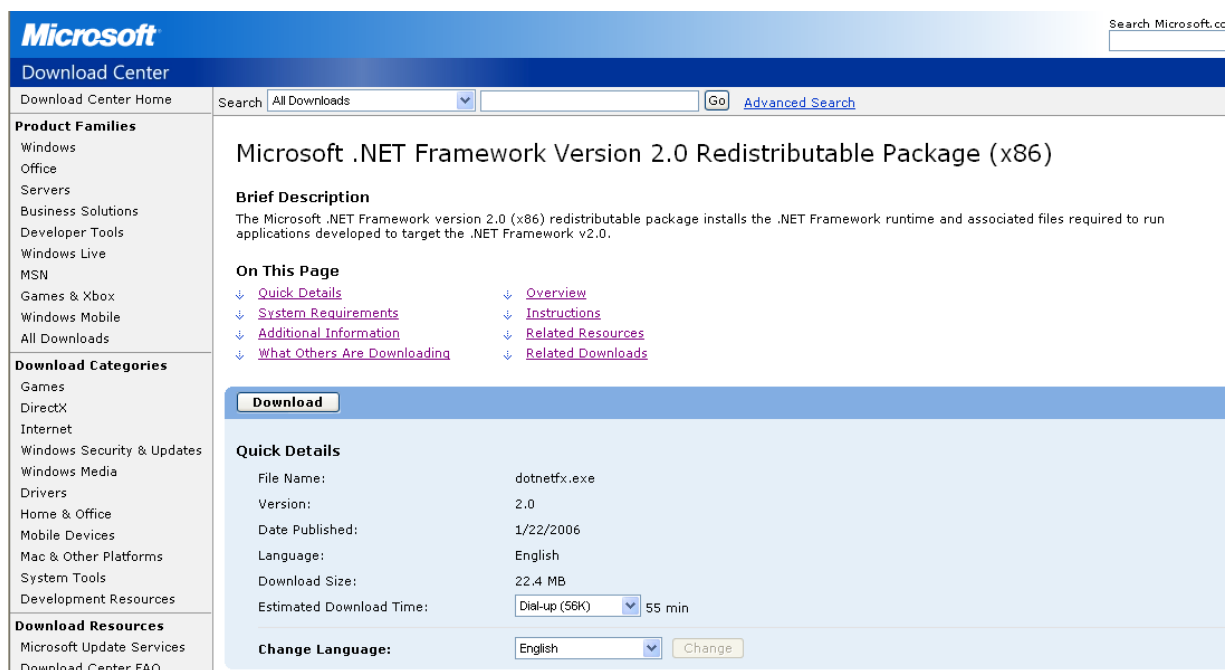
If you see .NET framework 2.0 listed, you do **NOT** need to continue with this section. Go to the next section and continue with the remaining installations.

Installing the .NET 2.0 Framework

.NET Frameworks are available from Microsoft free of charge.

If you have not downloaded the installation files already, click on this link to get to Microsoft's download pages.

<http://www.microsoft.com/downloads/details.aspx?FamilyID=0856EACB-4362-4B0D-8EDD-AAB15C5E04F5&displaylang=en>



Microsoft Search Microsoft.cc

Download Center

Download Center Home Search All Downloads [Go] [Advanced Search](#)

Product Families

- Windows
- Office
- Servers
- Business Solutions
- Developer Tools
- Windows Live
- MSN
- Games & Xbox
- Windows Mobile
- All Downloads

Download Categories

- Games
- DirectX
- Internet
- Windows Security & Updates
- Windows Media
- Drivers
- Home & Office
- Mobile Devices
- Mac & Other Platforms
- System Tools
- Development Resources

Download Resources

- Microsoft Update Services
- Download Center FAQ

Microsoft .NET Framework Version 2.0 Redistributable Package (x86)

Brief Description

The Microsoft .NET Framework version 2.0 (x86) redistributable package installs the .NET Framework runtime and associated files required to run applications developed to target the .NET Framework v2.0.

On This Page

- [Quick Details](#)
- [System Requirements](#)
- [Additional Information](#)
- [What Others Are Downloading](#)
- [Overview](#)
- [Instructions](#)
- [Related Resources](#)
- [Related Downloads](#)

Download

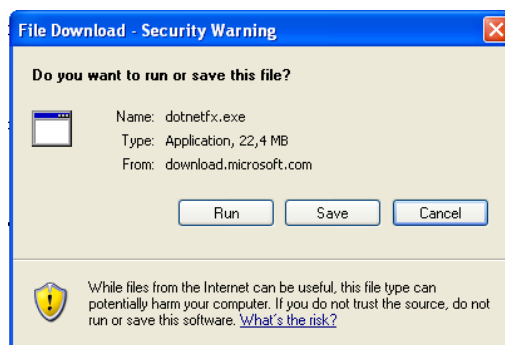
Quick Details

File Name:	dotnetfx.exe
Version:	2.0
Date Published:	1/22/2006
Language:	English
Download Size:	22.4 MB
Estimated Download Time:	Dial-up (56K) 55 min

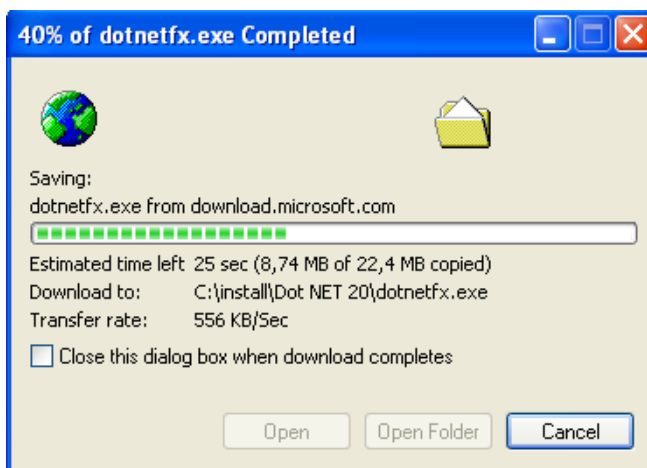
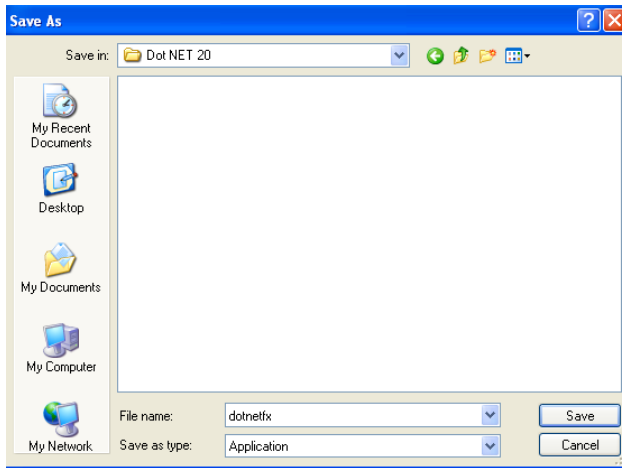
Change Language: English [Change](#)

Click on the “Download” button to start the download.

If this pop-up appears, choose option “Save” to get the installation file.



Create a new folder i.e. C:\install\DotNET20 and click on the “Save” button.

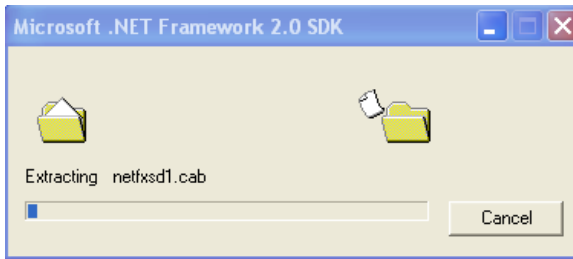


The download should only take a minute or two.

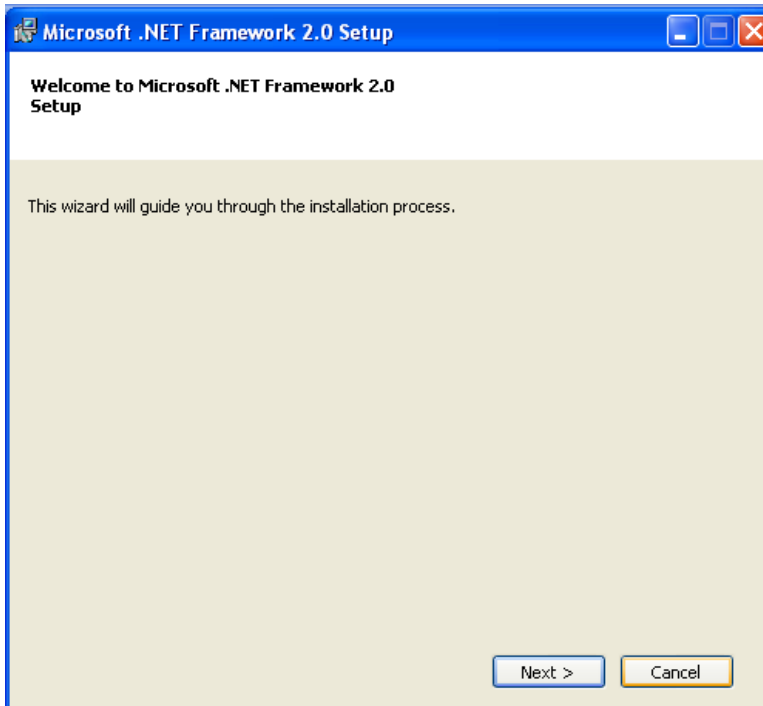
Open the “File Explorer” and navigate to the new folder where you downloaded the installation file. (i.e. C:\install\DotNET20)

Double click on the .NET 20 Installation file to start the installation

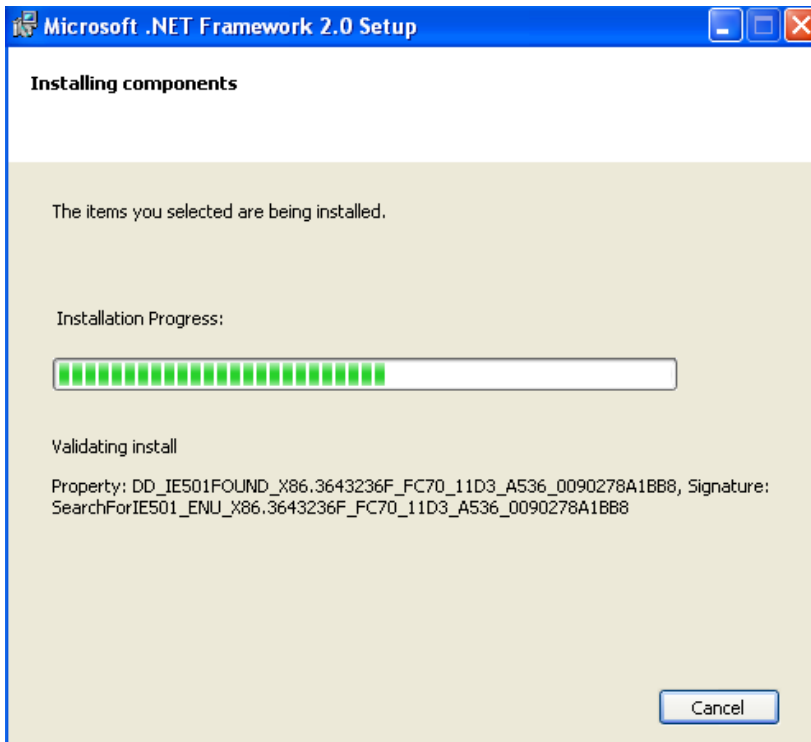
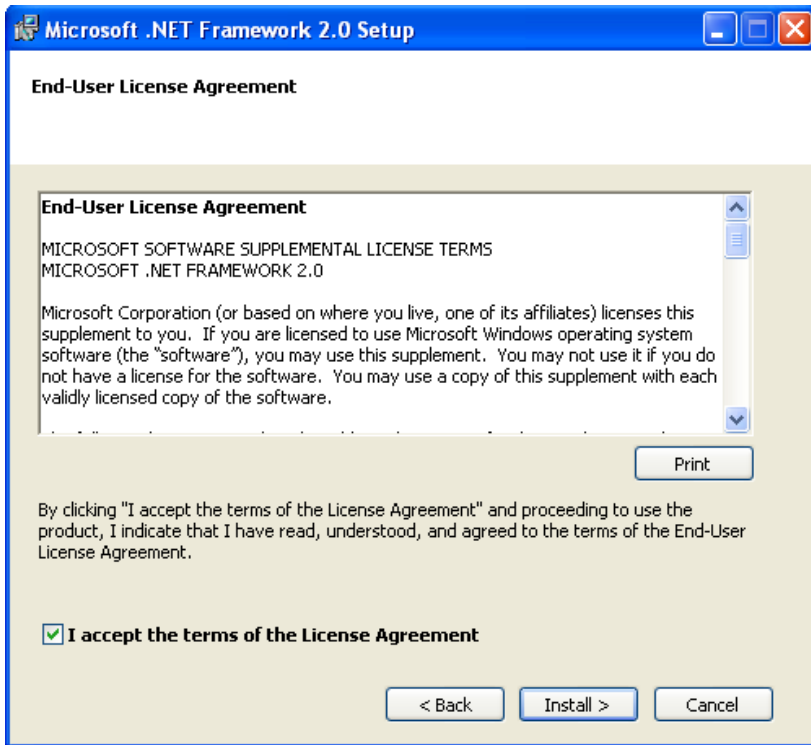
Name	Size	Type	Date Modified
dotnetfx	22,960 KB	Application	08.04.2008 09:56



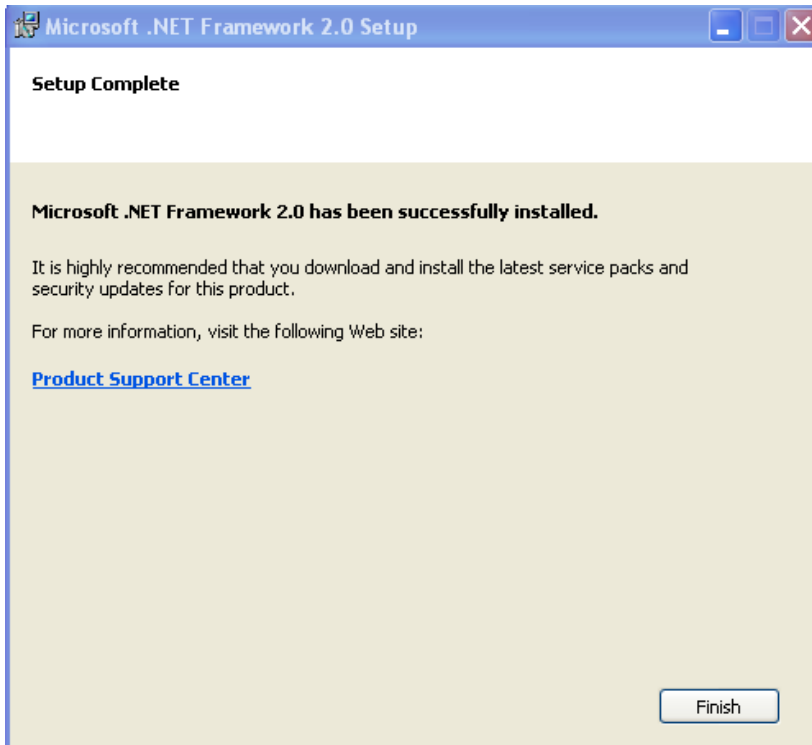
Click "Next" to continue



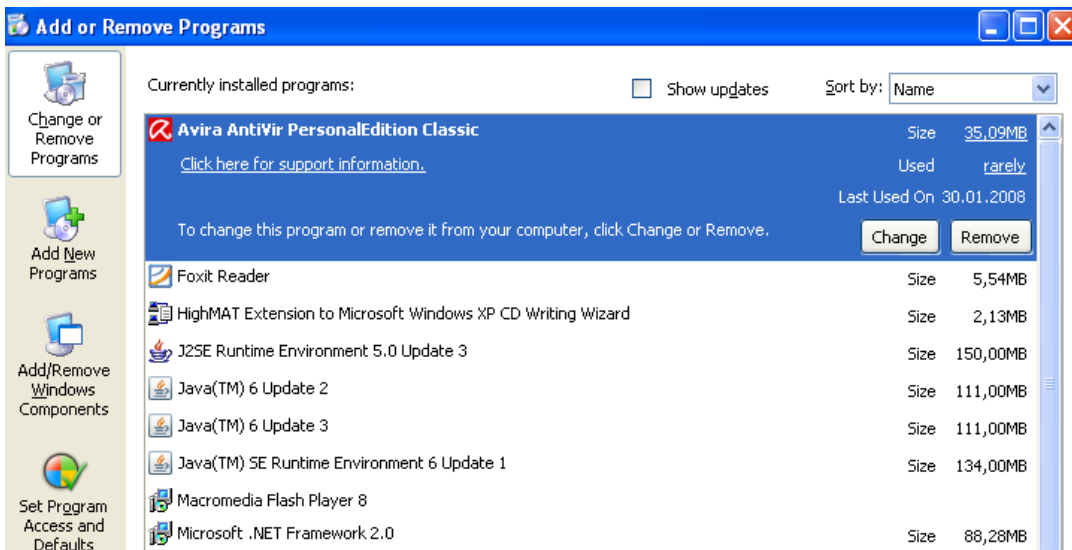
Place a check mark to accept then Click "Next" to continue



After a while the setup is complete. Click "Finish" to end.



Run the Control Panel to verify .NET 20 is installed.



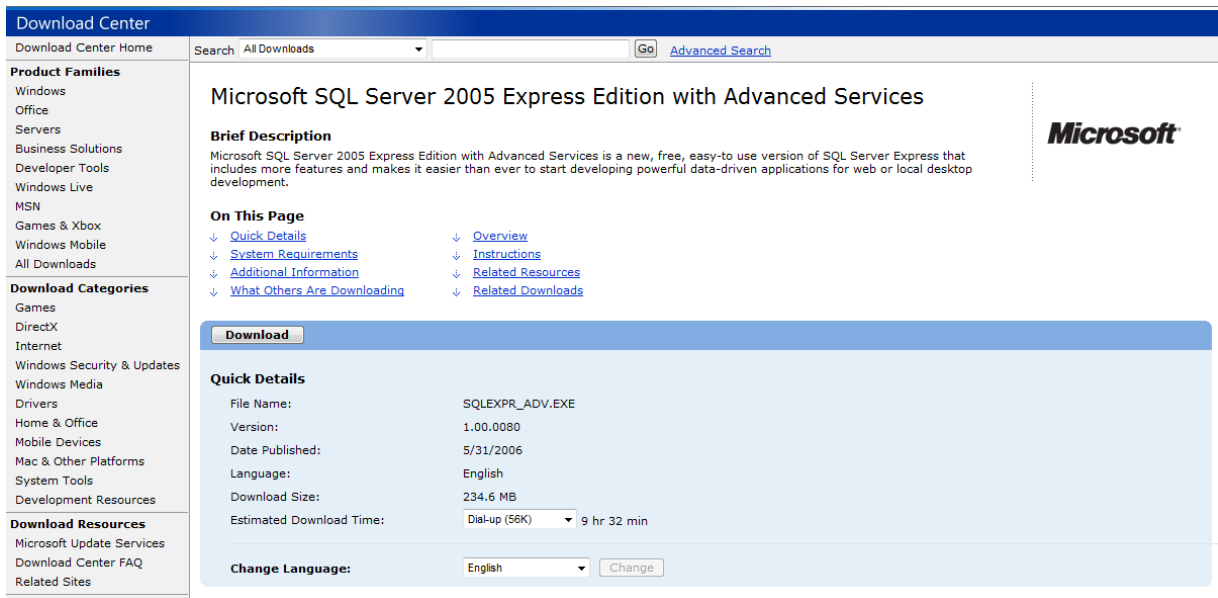
Installing MS SQL Server 2005 (Express)

SQL Server 2005 Express is available from Microsoft free of charge. When running ARAS Innovator on the full version of SQL Server you must license the SQL Server database from Microsoft.

For a test system of ARAS Innovator SQL Server 2005 Express is sufficient !!!

If you have not downloaded the installation files already, click on this link to get to Microsoft's download pages.

<http://www.microsoft.com/downloads/details.aspx?familyid=4C6BA9FD-319A-4887-BC75-3B02B5E48A40&displaylang=en>



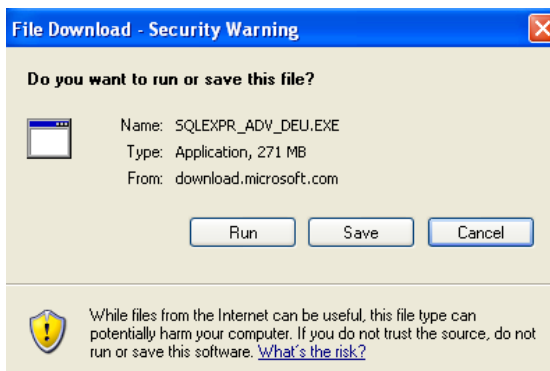
The screenshot shows the Microsoft Download Center interface. The main heading is "Microsoft SQL Server 2005 Express Edition with Advanced Services". Below this is a "Brief Description" and a "Quick Details" section. The "Quick Details" section includes the following information:

File Name:	SQLEXPR_ADV.EXE
Version:	1.00.0080
Date Published:	5/31/2006
Language:	English
Download Size:	234.6 MB
Estimated Download Time:	Dial-up (56K) 9 hr 32 min

At the bottom of the "Quick Details" section, there is a "Change Language:" dropdown menu set to "English" and a "Change" button. A prominent "Download" button is located above the "Quick Details" section.

Click on the "Download" button to start the download.

If this pop-up appears, choose option "Save" to get the installation file.

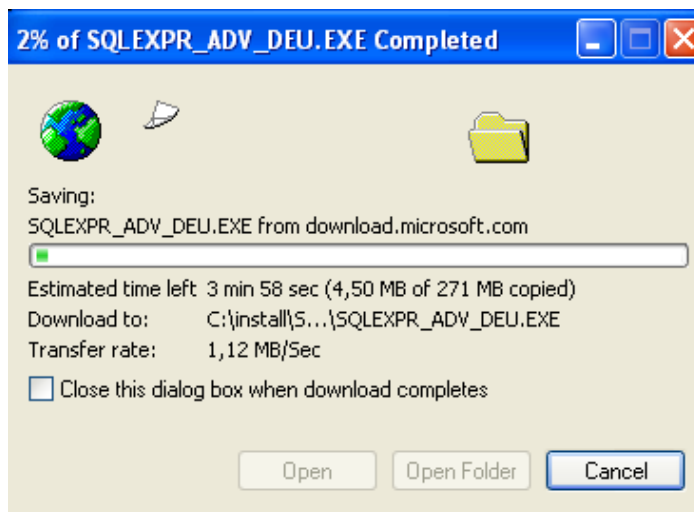
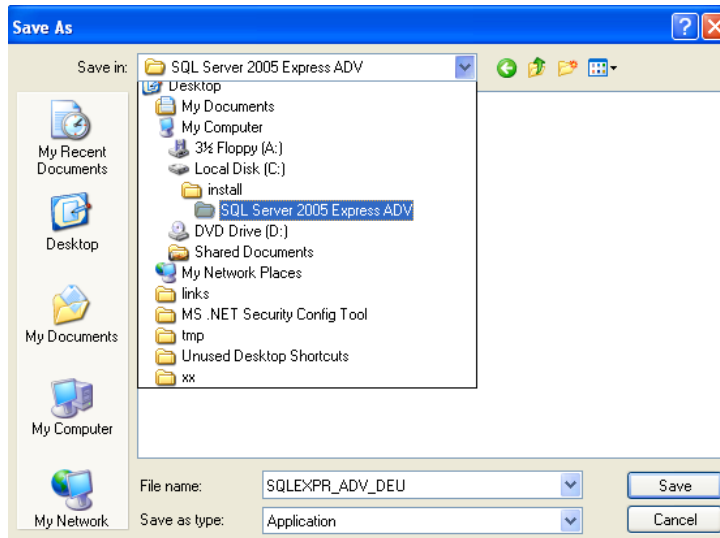


The screenshot shows a "File Download - Security Warning" dialog box. It asks "Do you want to run or save this file?". The file information is as follows:

Name:	SQLEXPR_ADV_DEU.EXE
Type:	Application, 271 MB
From:	download.microsoft.com

At the bottom of the dialog box, there are three buttons: "Run", "Save", and "Cancel". Below the buttons is a warning icon and text: "While files from the Internet can be useful, this file type can potentially harm your computer. If you do not trust the source, do not run or save this software. [What's the risk?](#)"

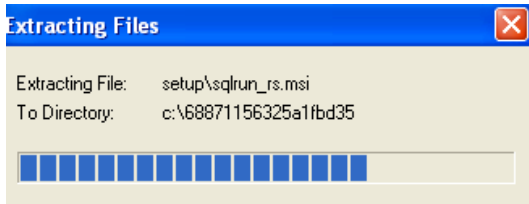
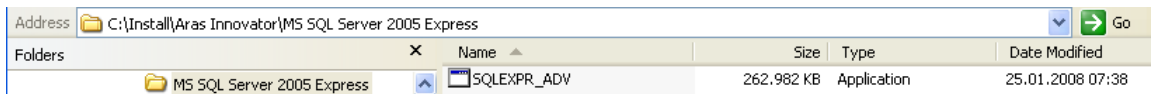
Create a new folder i.e. “C:\install\ SQL Server 2005 Express ADV” and click on the “Save” button.



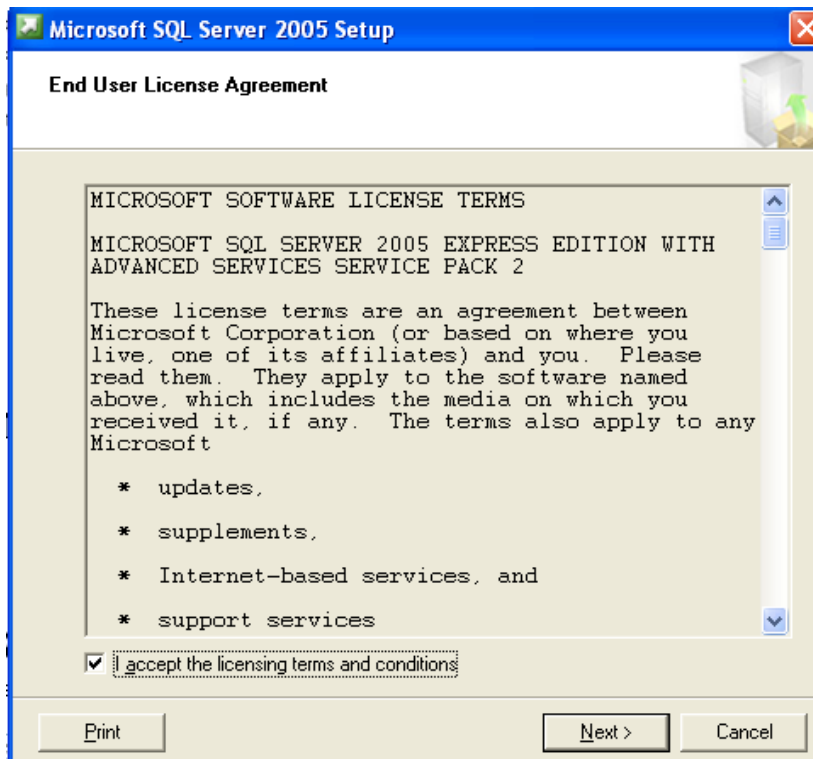
This download can take a few minutes (~15Min)

When the download has finished, open the “File Explorer” and navigate to the new folder where you downloaded the installation file. (i.e. C:\install\ SQL Server 2005 Express ADV)

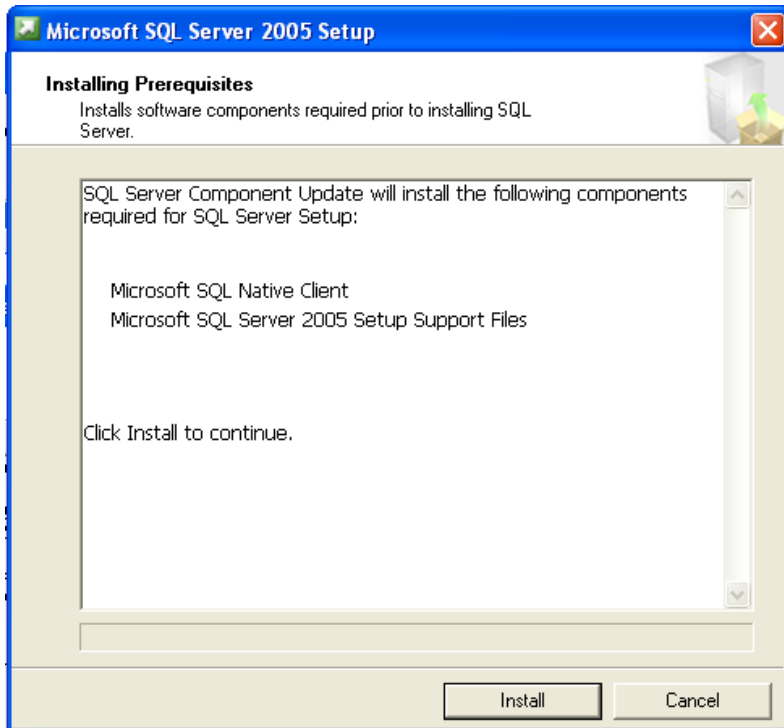
Double click on the installation file of SQL Server 2005 Express Advanced



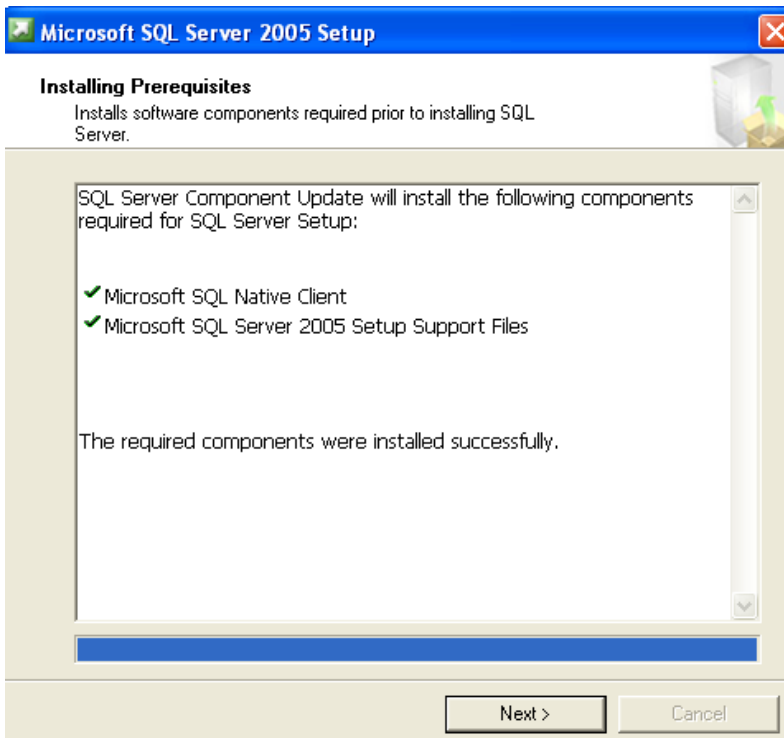
Click "Next" to continue

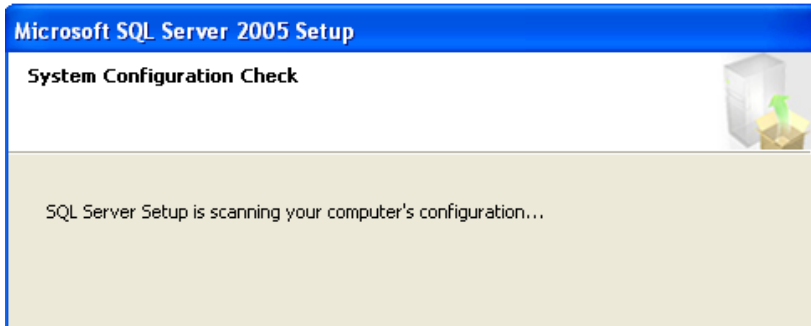


Click "Install" to continue



Click "Next" to continue

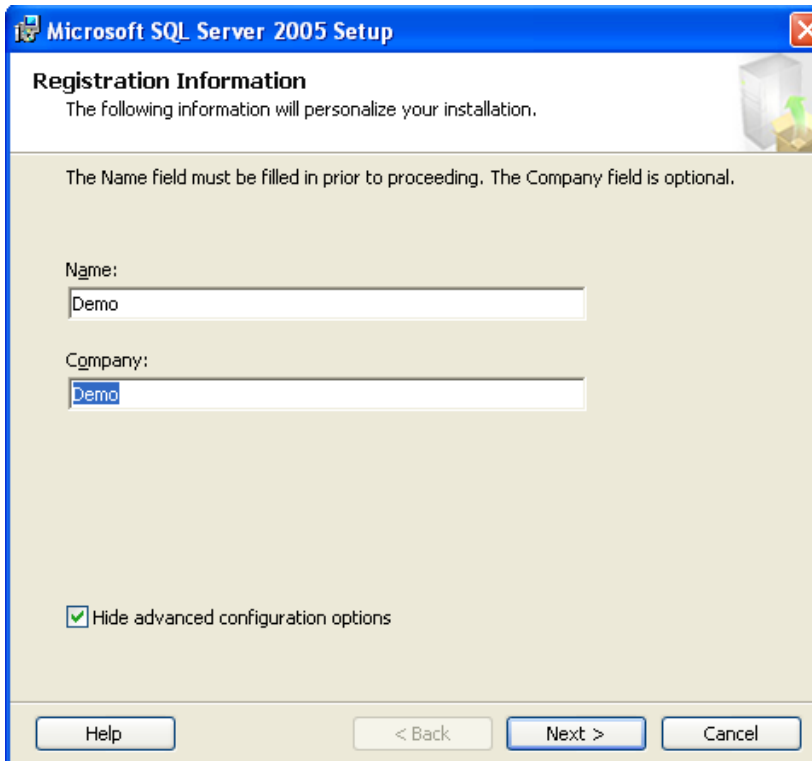




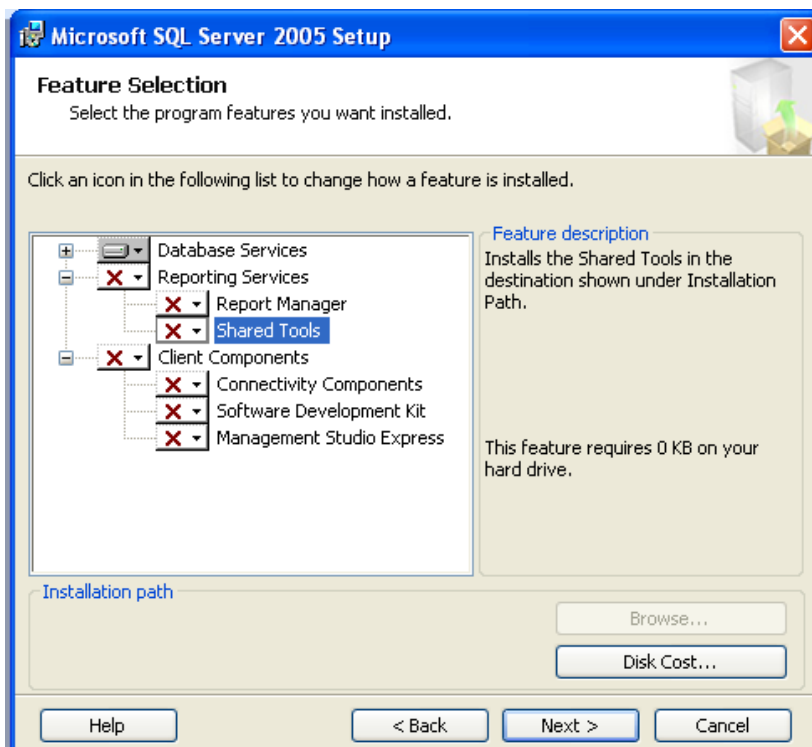
Click "Next" to continue



When system configuration check has finished successfully click "Next" to continue

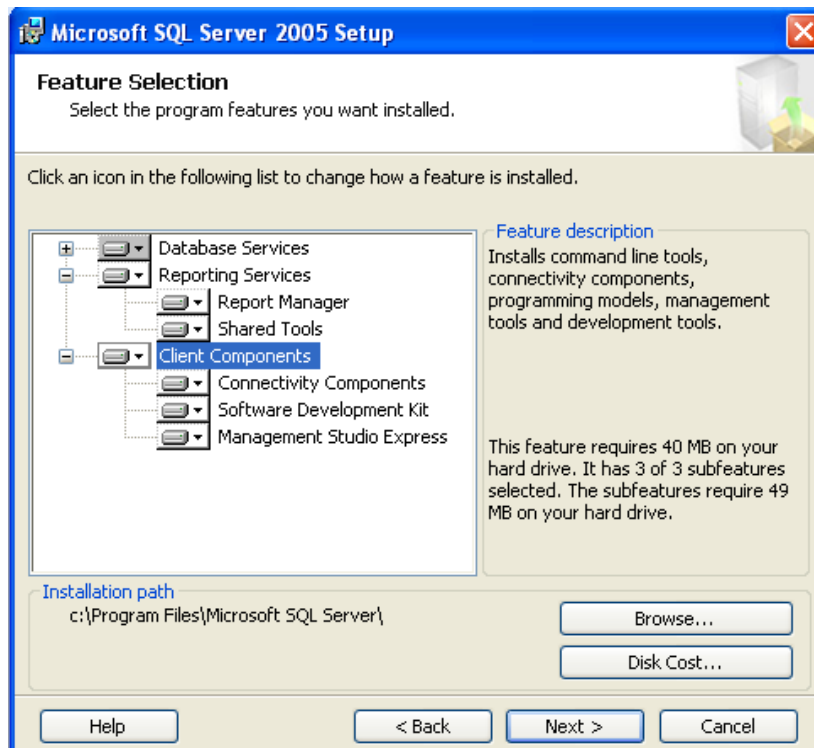
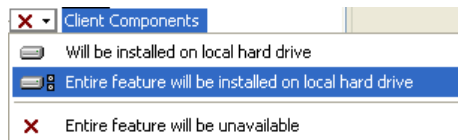


FOR THE NEXT STEP DO NOT USE THE DEFAULT !!!



DO NOT CLICK "NEXT" YET !!!

Change options to include entire features as shown below



Click “Next” to continue

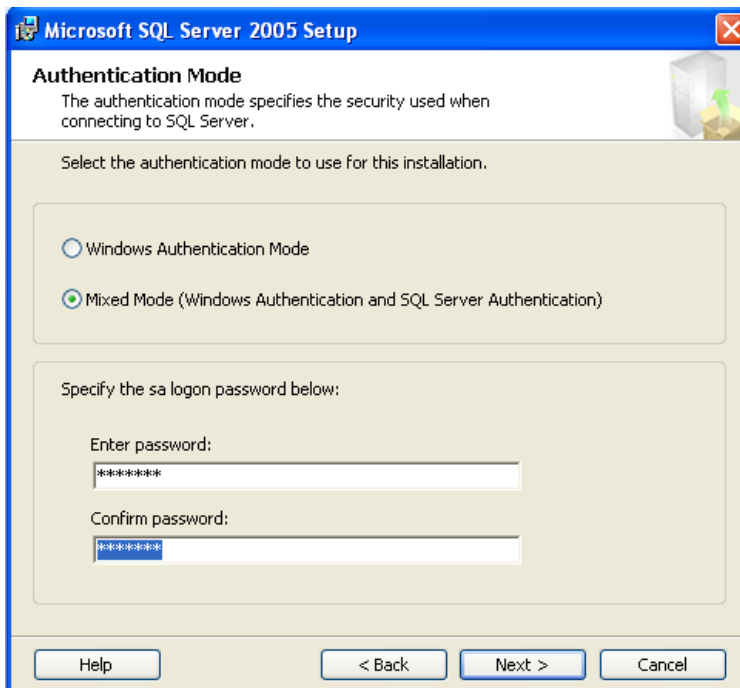
ATTENTION (on the next step):

You have to define the Authentication Mode.
Do **NOT** use the default “Windows Authentication”.
Change the option to **“Mixed Mode”** !!!

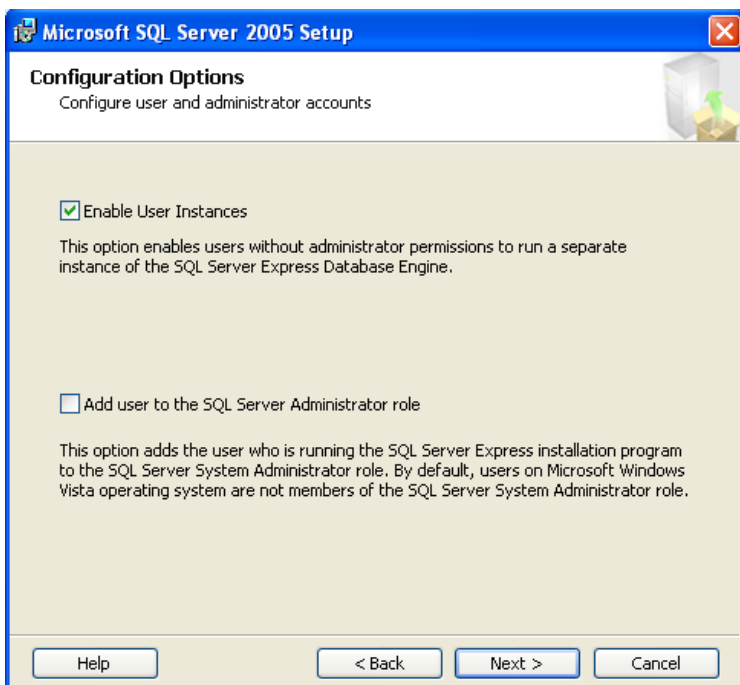
There you have to provide the password for the database system administrator “sa”

NOTE: The password you use here you must remember as you will need it again during installation of ARAS Innovator later on !

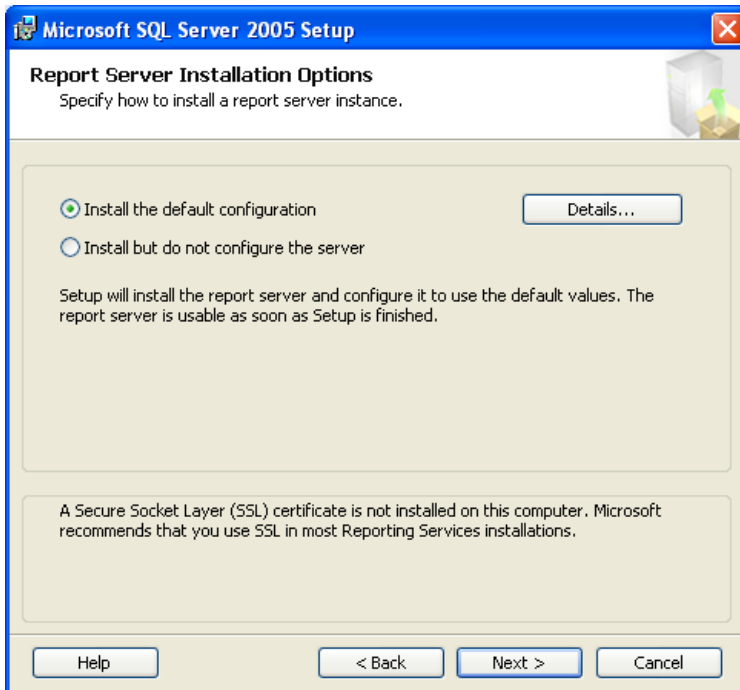
In the example here we use **“manager”**



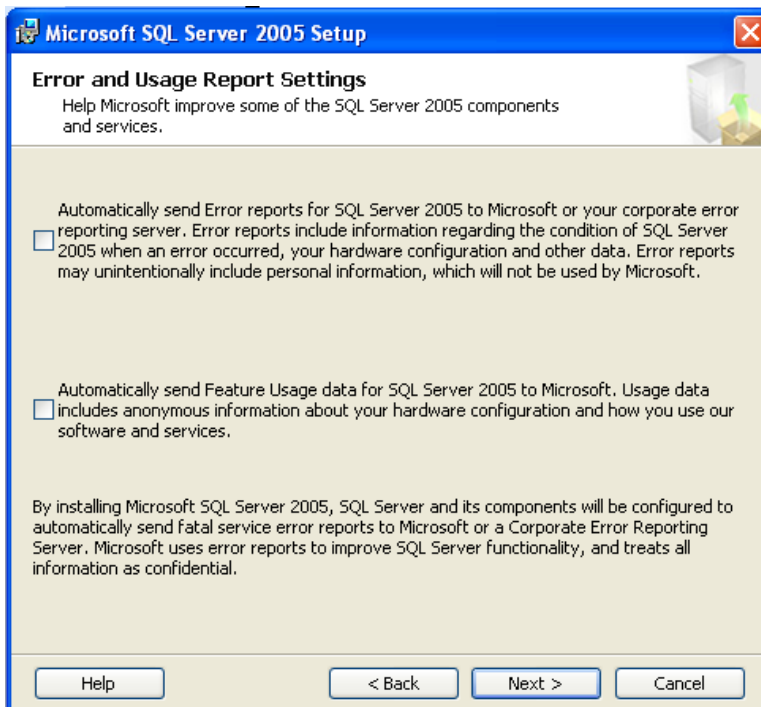
Click “Next” to continue



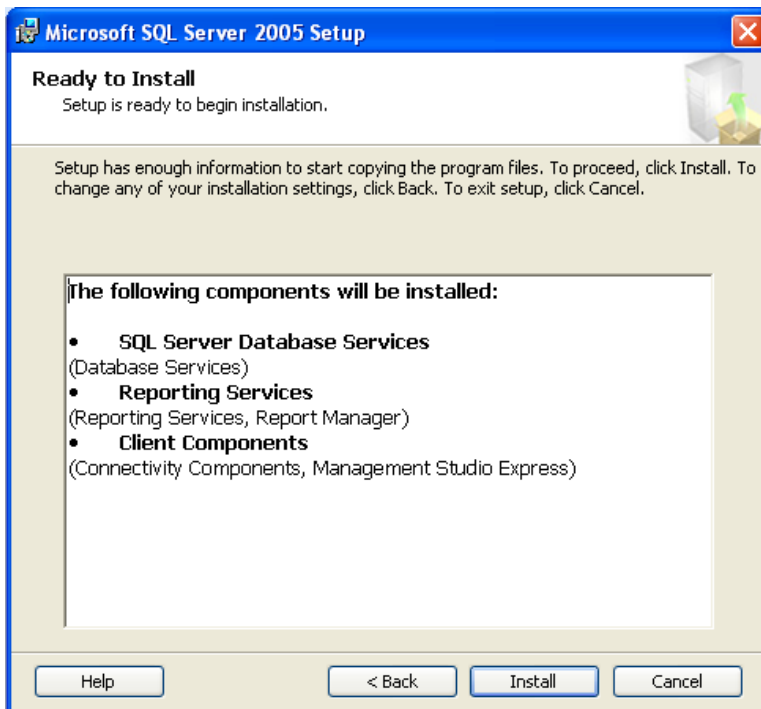
Click “Next” to continue



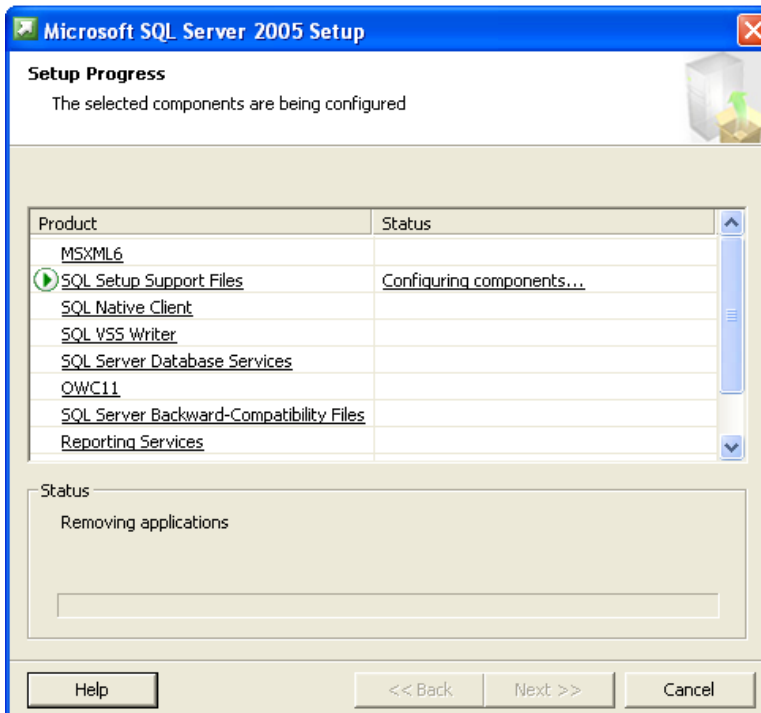
Click “Next” to continue

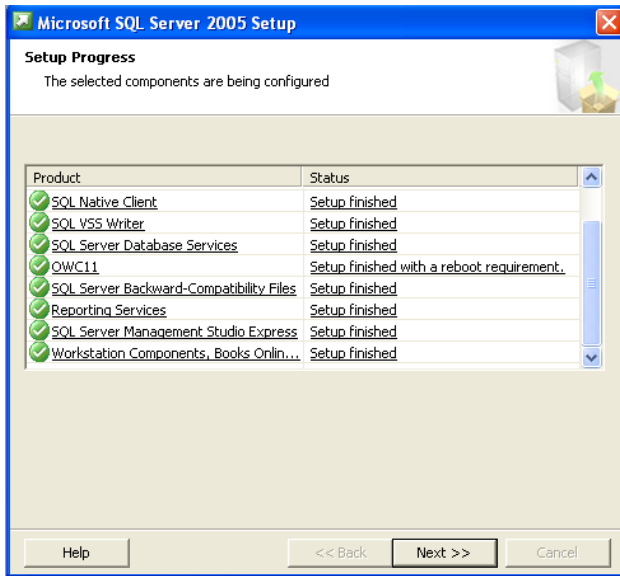


Click “Next” to continue

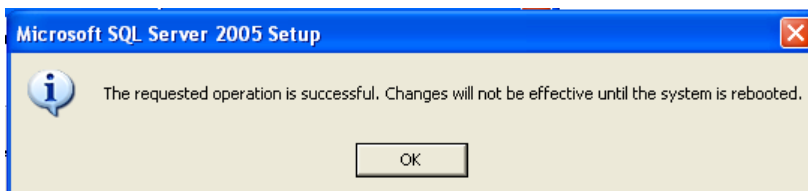
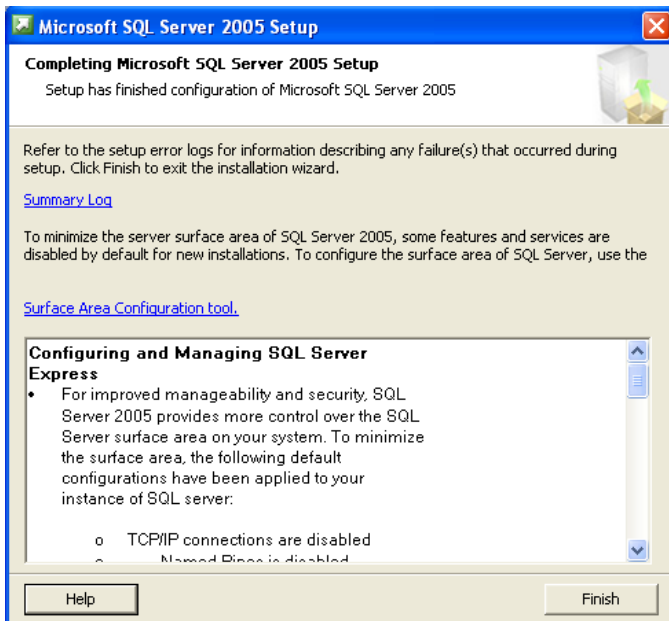


Click "Install" to continue





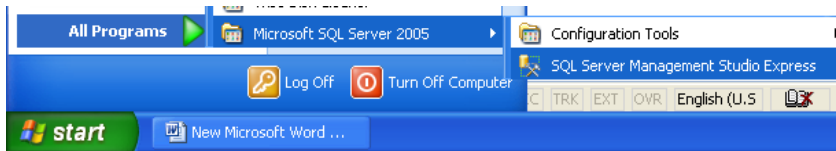
After all components have installed, click “Next” to continue. Then click “Finish” to close the installation wizard.



Click OK and then restart the computer !!!

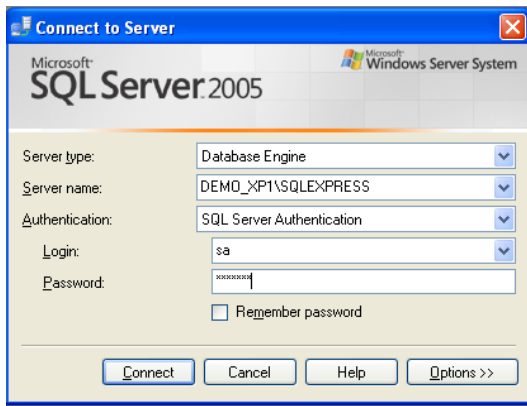
Verifying the SQL Server installation

Click on “Start” and find the “SQL Server Management Studio Express” program and start it.

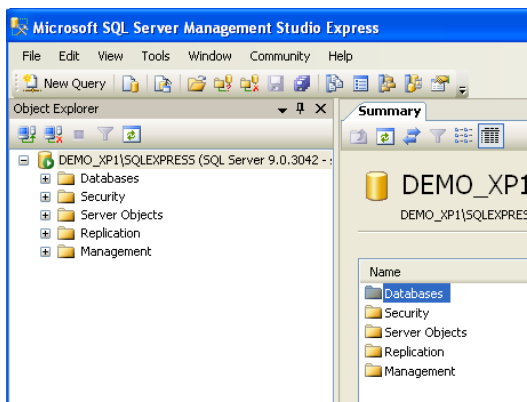


Change the Connect option to “**SQL Server Authentication**” !!!

And login as “**sa**” with the password you’d given during the previous install. i.e. “**manager**”. Then click “Connect”



You should be able to login and see this.



If you cannot connect, your SQL Server installation has not completed successfully or you did not specify “Mixed Authentication” during install. Remove the program and install again.

Exit the SQL Server Manager Studio.



Congratulations...

On this test server you are now ready to start with the Aras Innovator 9.x installation as a next step.

Please refer to the appropriate “Step by Step – instructions” for the Aras Innovator installation.

With the software you now have installed on this system you can install the following Aras Innovator Releases:

- Aras Innovator - 8.01
- Aras Innovator - 8.2
- Aras Innovator - 9.01
- Aras Innovator - 9.02
- Aras Innovator - 9.1.0
- Aras Innovator - 9.1.0 – service packs

For training contact Aras directly at www.aras.com/university.

For [online Aras PLM Training](http://www.plm-training.com) go to www.plm-training.com developed by the [PLM consulting firm, TAG Consulting LLC](http://www.plm-training.com).

Trouble Shooting: Verify IIS settings and IE settings

Internet Explorer 7

Once you have logged into the client PC machine as an administrator, you may configure Internet Explorer using the following steps

1. Open an Internet Explorer window.
2. From the Menu Bar select Tools ☰ Internet Options
 - a. Select the Security tab
 - i. Select the Trusted Sites Zone
 1. Select the Sites button
 - a. Add the URL for Innovator to this zone.
 2. Enable Protected Mode (*Vista Only*) – **Disable**
 - ii. Select the Custom Level button and insure the following settings (scroll down to find an appropriate option):
 1. .NET Framework-reliant components
 - a. Run components not signed with Authenticode – **Enable**
 - b. Run components signed with Authenticode – **Enable**
 2. ActiveX controls and plug-ins
 - a. Download signed ActiveX controls – **Enable**
 - b. Run ActiveX controls and plug-ins – **Enable**
 - c. Script ActiveX controls marked safe for scripting – **Enable**
 3. Downloads
 - a. File download – **Enable**.
 4. Miscellaneous
 - a. Allow websites to open windows without address bar or status bar – **Enable**
 5. Scripting
 - a. Active scripting – **Enable**
 - b. Select the General tab
 - i. In the “Browser History” section, Select the Settings button
 1. Select ‘Every visit to the page’
 2. Select OK
 - ii. In the “Tabs” section, Select the Settings button
 1. In the “When a pop-up is encountered:” section select **Always open Pop-ups in a new window** (*Let internet explorer decides how pop-ups should open is the minimum setting allowed.*)
 - c. Select the Advanced tab
 - i. Browsing
 1. Disable script debugging (Internet Explorer)
 - a. Aras recommends disabling script debugging for any user not actively debugging their client machine. This is only recommendation and not a requirement. For more information please see [ActiveX control is deactivated when other applications are docked with Internet Explorer on the Windows Desktop](#)
 2. Disable script debugging (Other)
 - a. Aras recommends disabling script debugging for any user not actively debugging their client machine. This is only recommendation and not a requirement. For more information please see [ActiveX control is deactivated](#)